

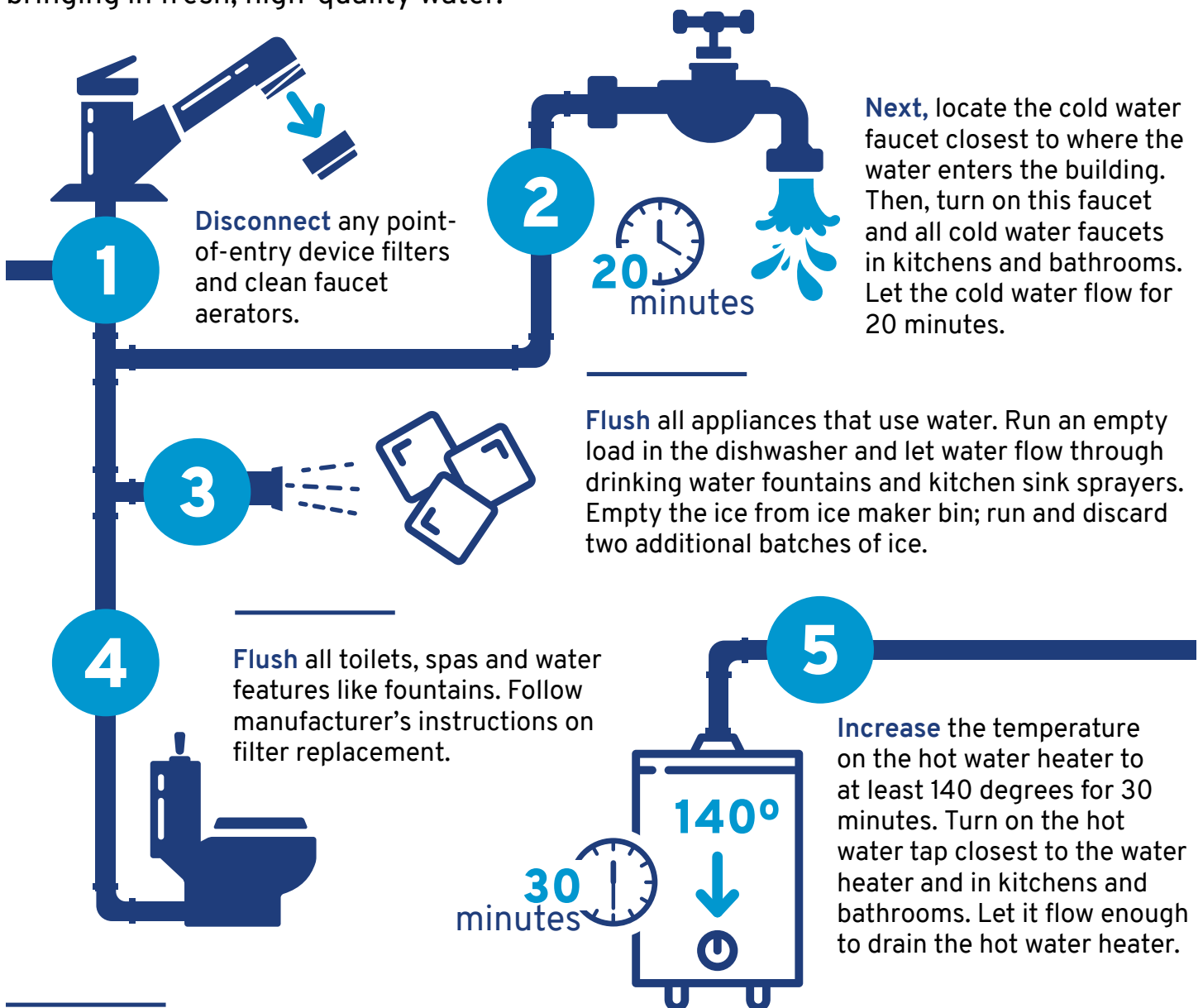
Has Your Building Been Partially or Fully Closed for Months?

Flush the Water Pipes.



Infographic courtesy of Louisville Water Company

Drinking water is delivered through a network of pipes to businesses, long-term care facilities, schools, and other buildings. After the water flows through a meter, building owners are responsible for maintaining water quality. Flushing the water lines is an easy way to help maintain quality by moving the older water out of the pipes and bringing in fresh, high-quality water.



Remember to turn off all faucets and reset the water heater.